



Meetings at Kanalhuset 2026

1st of January to 31st of December 2026

Daily Meeting

8.00 - 16.00

850 dkk pr person

A light breakfast

Lunch including water

Afternoon cake

Coffee, tea water in the room

Projector and flipboard

Paper and pens

WIFI internet

Half day meeting

Afternoon 12.30 - 16.00

650 dkk

Lunch including water

Afternoon cake

Coffee, tea water in the room

Projector and flipboard

Paper and pens

WIFI internet

Whole day meeting with Dinner

8.00 - 17.30

1200 dkk pr person (Social Dining)

1550 dkk pr person (Privat Dining)

A light breakfast

Lunch including water

Afternoon cake

Coffee, tea water in the room

Social dining in the dining room or

Private dining in one of our separate rooms

Projector and flipboard

Paper and pens

WIFI internet

Half day meeting with dinner

Afternoon 12.00 – 17.30

1000 dkk pr person (Social Dining)

1350 dkk pr person (Privat Dining)

Lunch including water

Coffee, tea and water in the room

Afternoon cake

Social dining in the dining room or

private dining in one of our separate rooms

Projector and flipboard

Paper and pens

WIFI internet

Please note that it is not permitted to
bring food and beverages

It is not possible to play music

Half day meeting

Noon 8.00 - 12.30

650 dkk

A light breakfast

Lunch including water

Coffee, tea water in the room

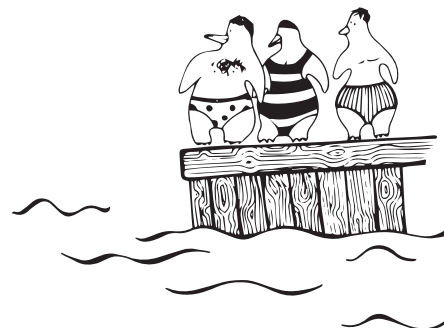
Projector and flipboard

Paper and pens

WIFI internet

Activities

Here in the house, we have our weekly fast activities. We have Yoga, morning singing and morning dips and a running club. If you would like one of these activities to be part of your day, let us know. Then we can tell you more about it. On our website you can read more about our activities



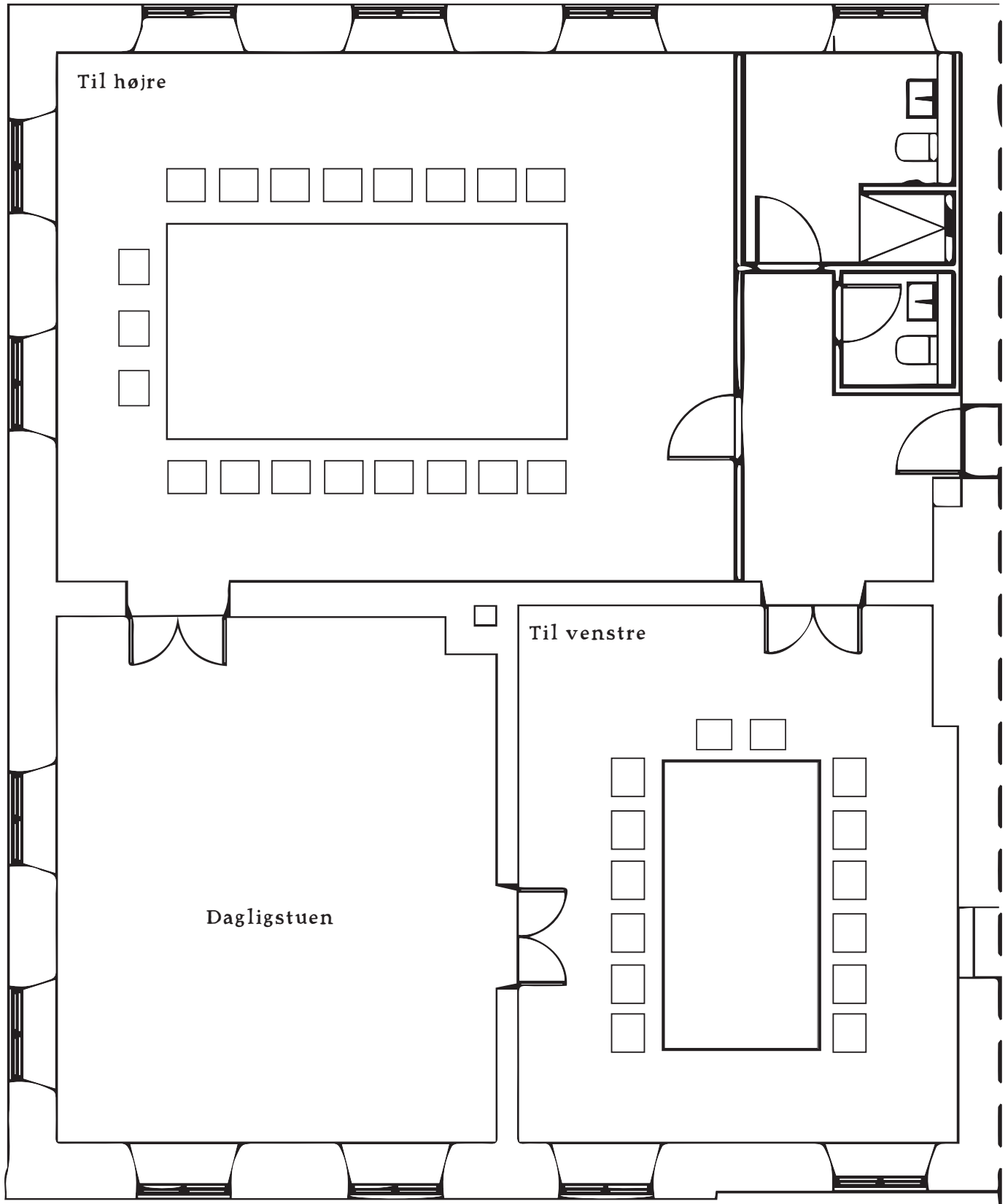
L. Sørensen 2nd floor

Til højre 60 kvm2 19 persons

Til Venstre 38 kvm2 14 persons

Dagligstuen 38 kvm2 (Is not rented out separately)

The Canal



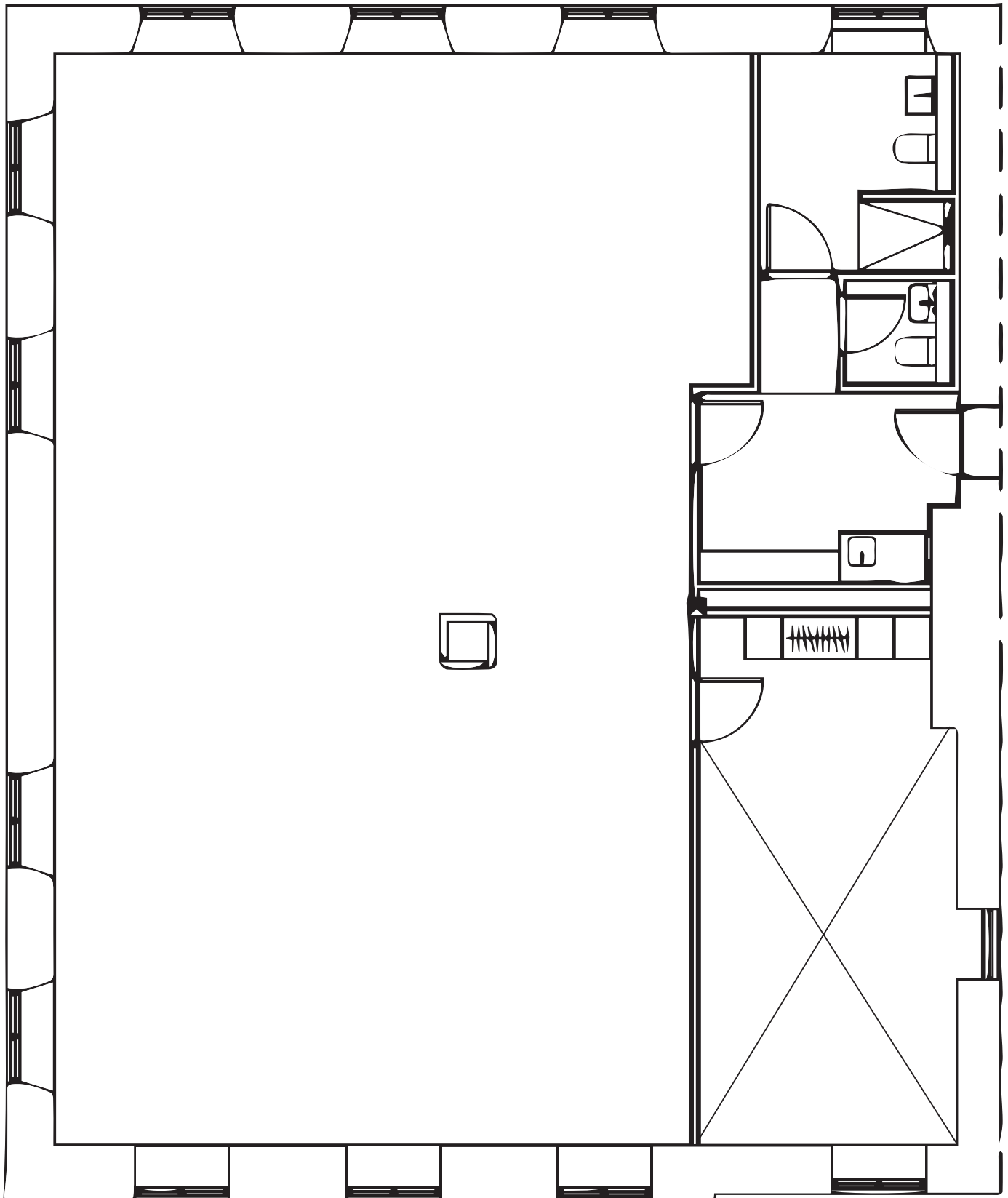
The drawing is not drawn to scale

K. Larsen 1st floor

120 kvm²

Max 50 persons

The Canal



The drawing is not drawn to scale



L. Sørensen - Til Højre



L. Sørensen - Til Venstre



L. Sørensen - Dagligstuen



L. Sørensen - Dagligstuen



K. Larsen